

## Scan to Surface - Aurum



auRum /  Geomagic Wrap®

Scan it, Mesh it, Surface it. In minutes.

**Scan To Surface** delivers the industry's most powerful tools to 3d Scan anything from the real world and transform it into 3d models for immediate use downstream. From engineering to entertainment, art to archaeology and manufacturing to museums, people from every walk of life are effortlessly reverse engineering perfect 3D models from Open Technologies **Aurum** scan data using **Geomagic Wrap**.



## Unparalleled Scan Freedom within intuitive workflows

Scan with the highest possible resolution thanks to Open Technologies 3d sensors **Aurum**.

Choose among different registration strategies; Automatic Matching, Calibrated rotation axes or Targets according to your specific 3D Scan needs and the complexity of the real model, while the most intuitive set of parameters allows to directly scan numerous different kind of materials and finishing. Digitize Geometries as well as colors and textures with Open Technologies State of the Art Devices.

Enjoy the flexibility provided by **Aurum**, the ultimate choice in 3d scanners for jewels and small parts.

## Revolutionize Your 3d Workflow

Geomagic Wrap delivers the most easy-to-use, affordable, fast, accurate path from 3D polygonal models to surface models that can be used instantly in downstream engineering, manufacturing, art, industrial design and more. As part of your 3D digital thread, Geomagic Wrap provides the digital bridge to allow you to create perfect data to use directly in 3D printing, milling, archiving and multiple other 3D uses.

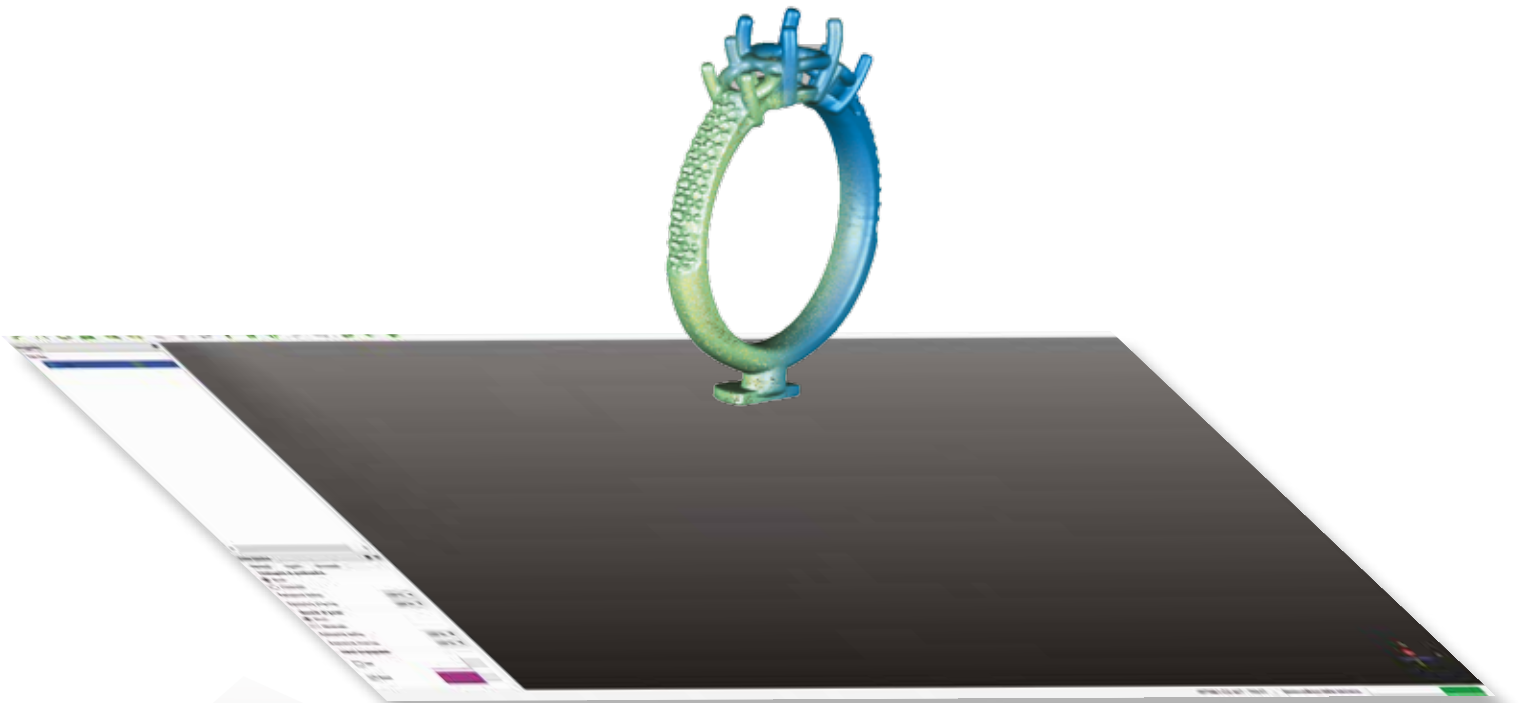
With Geomagic's advanced Exact Surfacing tools included, Geomagic Wrap delivers power yet ease-of-use in cutting-edge modeling functions for that flawless 3D model. Scripting and macros available also automate functions for repetitive tasks during the reverse engineering process.

## Accurately and Effortlessly Build Usable 3D Data

*Geomagic Wrap* enables users to transform 3d Scan data and intermingle imported 3D formats (STL, OBJ, etc.) into 3D surface models for immediate use. Unique automated tools for rapid point cloud cleanup and surfacing allow you to perform complex tasks quickly and with confidence. Color data from **Aurum** 3D scans can be managed, edited and saved as texture maps for your color 3D prints.

## Lifelike rendering in Minutes

With each seat of Wrap you get a seat of KeyShot for 3D Systems, the easiest and most effective 3D rendering software on the market. With **Aurum**, KeyShot and Geomagic, you can make designs and renderings that delight clients and amaze colleagues.



# The Fastest Path from 3D Scans to your CAD Software

## KEY FEATURES & WORKFLOW

Scan To Surface's comprehensive toolbox of point cloud and polygon editing features, plus powerful surfacing tools, help you create high-quality 3D models faster.

**3D Scan** parts down to the tiniest detail thanks to Aurum3d. From the real world to your digital environments.

**Point cloud editing** and fast creation of accurate 3d models based on the 3d Scan data.

**Powerful remesh tool** for a fast and accurate creation of a clean polygon model from problematic scans.

**Mesh editing tools** for hole filling, smoothing, patching and water tight model creation.

**Immediately use** 3d Scan Outputs for 3D Printing, rapid prototyping and manufacturing.

**Render your data** in Keyshot, present your designs with stunning, photorealistic visualizations.

**Curve** and hard feature extraction from polygon bodies for Design from Scan data applications.

**Powerful scripting tools** enable the extension of Wrap far beyond its off-the-shelf capabilities and the full automation of the routine .

**Precise surfacing** of the model into nurbs using the easy and comprehensive Exact surfacing interface.

**Extensive Exact Surfacing tools** give more control over your surface quality and layout, and allows for total control over NURBS patch layout, surface quality and continuity.

**File export formats** include: WRP, IGES, X\_T, SAT, PRC, STEP, VDA, NEU, 3DS, DXF, OOGL, IV, PLY, STL, WRL, OBJ.

### PRIMARY INDUSTRIES

- Footwear
- Automotive
- Toys
- Wood
- Eyewear
- Moulds
- Packaging
- Glass
- Design
- Research & Education

**SCAN:**  
Capture real world data using Open Technologies Aurum



#### PROCESS:

Make exact 3D models directly from the captured data.

#### 3D PRINT:

Output to 3D print, CNC and other downstream processes.



#### MESH:

Make exact 3D models directly from the captured data.

#### SURFACE:

Transfer 3D surface model to other CAD software.



#### MESH:

Make exact 3D models directly from the captured data.

#### RENDER:

Use downstream for special effects, movies and more.



# KEY FEATURES

## IMPORT / EXPORT

3DS	VTX, ASC
OBJ	IGIES
DXF	STEP
PLY	Parasolid
STL	Pro / ENGINEER
LWO	SAT
VRML	WRP

## HARDWARE FEATURES

	AURUM 3D	AURUM LT
<b>Field of view</b>	110 x 80 mm	110 x 95 mm
<b>Camera Resolution</b>	2 x 3.1 MPixels	2 x 1,31 MPixels
<b>Point Spacing</b>	53	86
<b>Turn table Payload</b>	6 Kg	1 Kg
<b>Outputs</b>	.STL, .OBJ, .PLY, .OFF, Curves and section in .Iges	
Our range of measuring devices is certified according to Vdi - Vde 2634 standards		

## Open Technologies srl

Via G. Matteotti, 161-163A  
25086 REZZATO (Brescia)  
IT03598170177

Ph +39 030.3543103 / Fax +39 030.349451

web [www.scanner3d.it](http://www.scanner3d.it)  
e-mail [industrial@scanner3d.it](mailto:industrial@scanner3d.it)  
skype [industrial\\_3dscanner](https://www.skype.com/name/industrial_3dscanner)